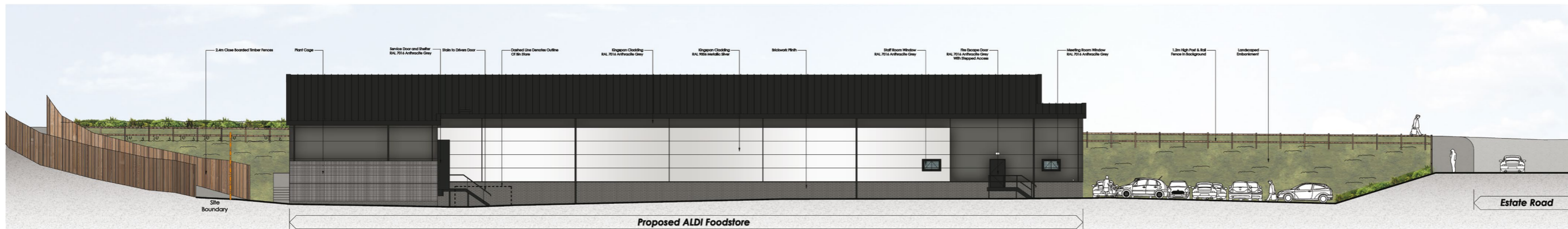


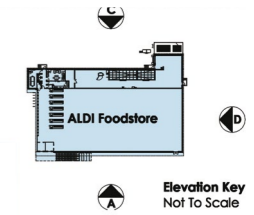
ELEVATION A



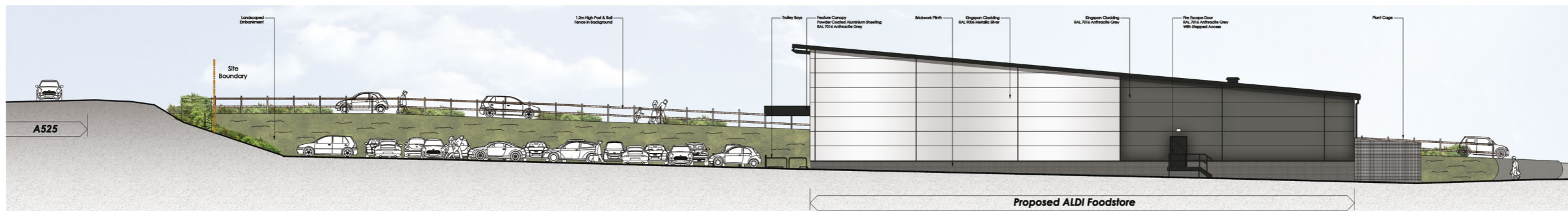
ELEVATION B



ELEVATION C



Elevation Key
Not To Scale



ELEVATION D

Proposed Development A525 Ruthin

Client: Aldi Stores Limited
Date: 17/04/19
Job/Dwg: 13850-V1048-Proposed Elevations
Scale: NTS@A3

THE HARRIS PARTNERSHIP
ARCHITECTS
2 St Johns North,
Wakefield, WF1 3QA
T: 01924 291 800
F: 01924 290 072

www.harrispartnership.com

