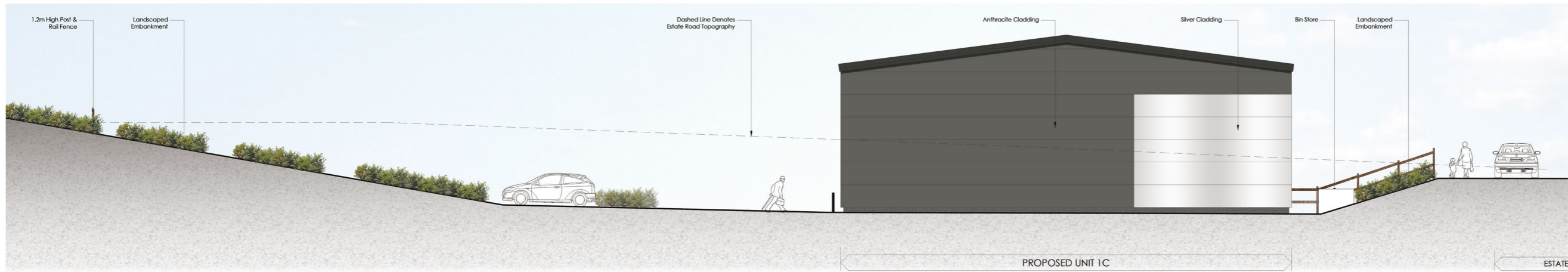
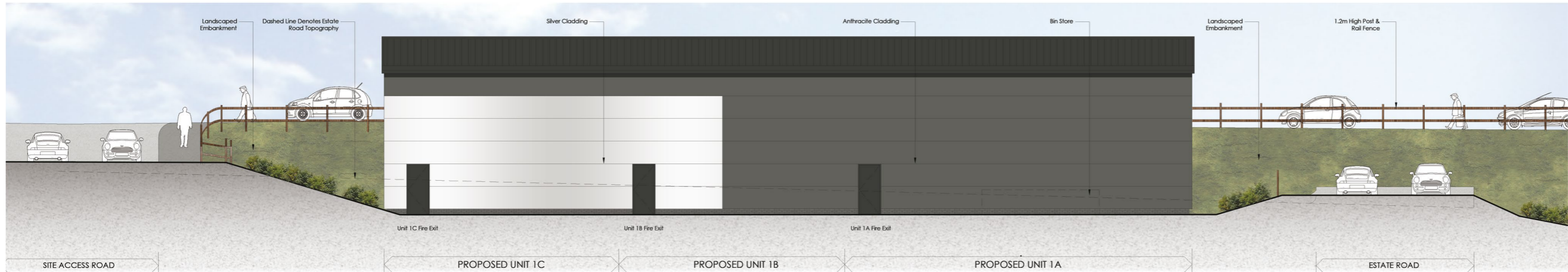




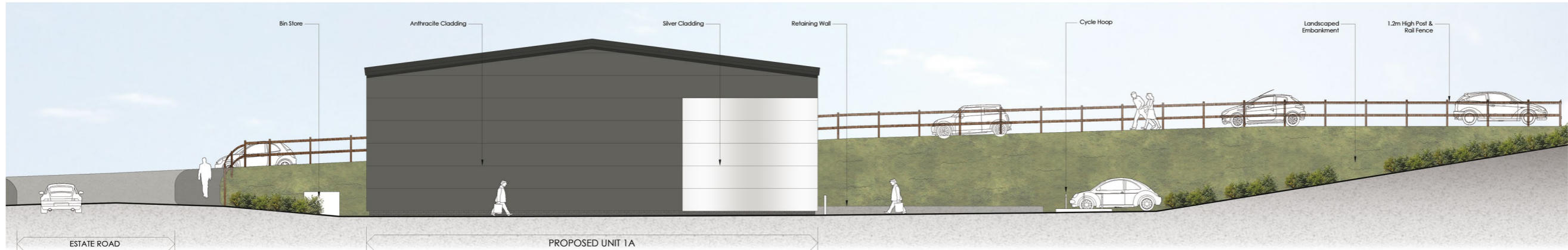
ELEVATION A



ELEVATION B

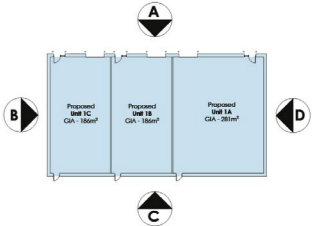


ELEVATION C



ELEVATION D

Elevation Key - NTS



Proposed Development  
A525  
Ruthin

Client: Aldi Stores Limited  
Date: 17/04/19  
Job/Dwg: 13850-V111D-Proposed Elevations  
Scale: NTS@A3

THE HARRIS PARTNERSHIP  
ARCHITECTS  
2 St Johns North,  
Wakefield, WF1 3QA  
T: 01924 291 800  
F: 01924 290 072

[www.harrispartnership.com](http://www.harrispartnership.com)

