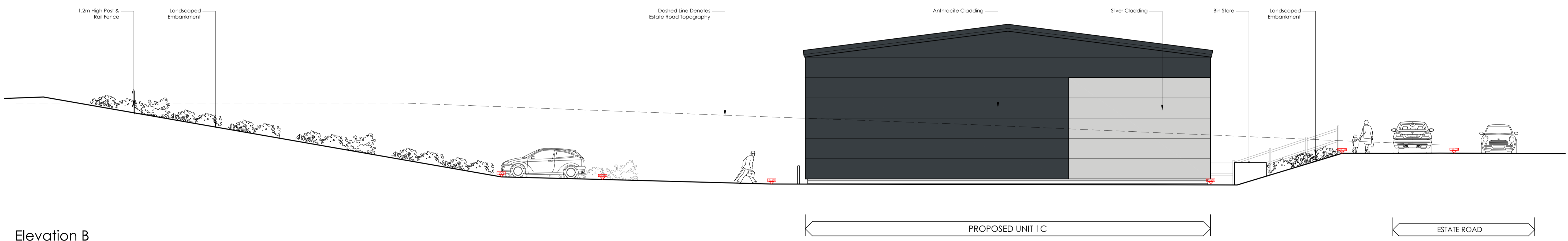
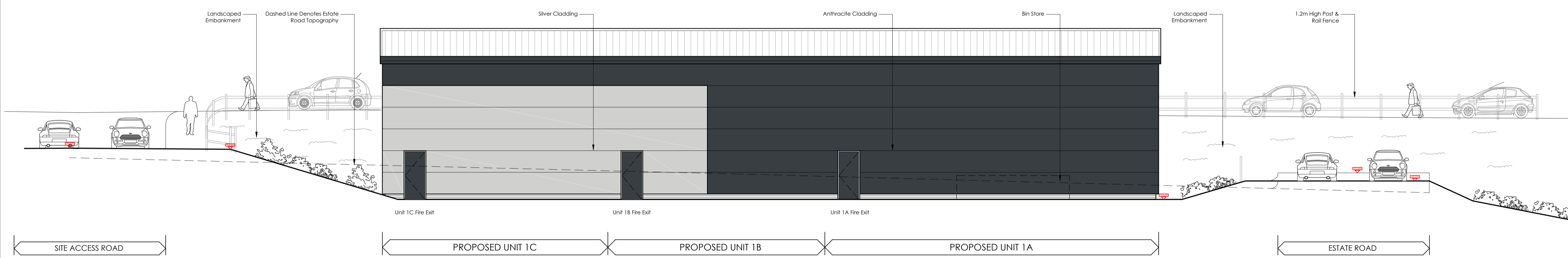


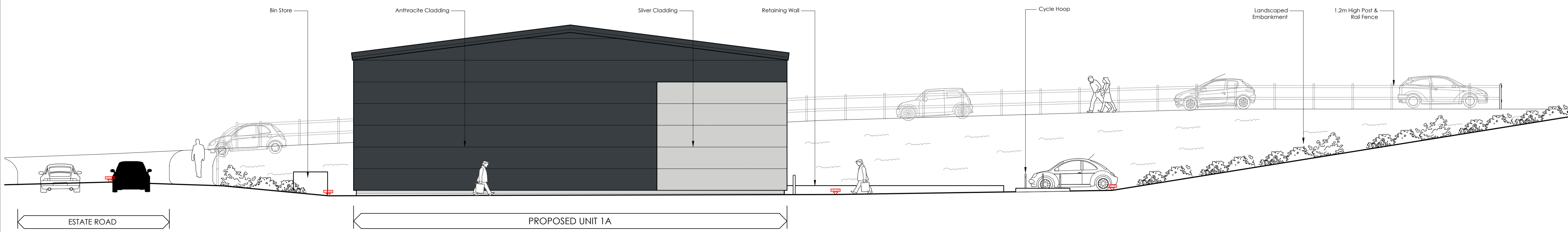
Elevation A



Elevation B

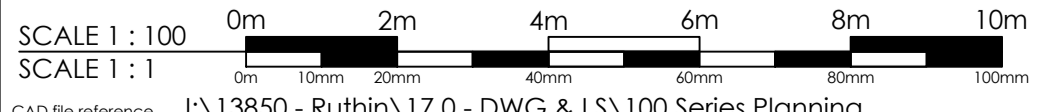


Elevation C



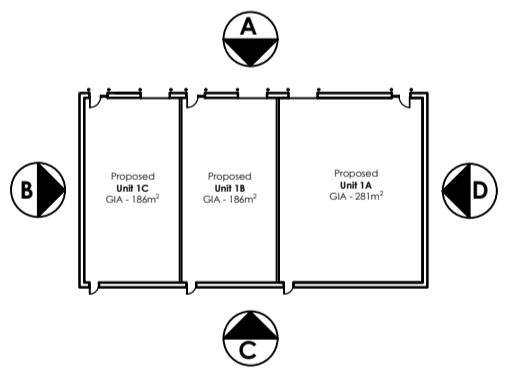
Elevation D

Proposed Employment Unit 1 Elevations - Scale 1:100



CAD file reference: J:\13850 - Ruthin\17.0 - DWG & I.S\100 Series Planning

Elevation Key - NTS



D	16/04/19	NOTES UPDATED.	MS	MS
C	08/04/19	NOTES UPDATED.	MS	MS
B	04/04/19	LEVELS UPDATED, ELEVATIONS AMENDED.	JA	MS
A	25/02/19	GENERAL UPDATE	MS	MS
Rev	Date	Description	Rev By	Cr'd By
Project Title: PROPOSED DEVELOPMENT				
A525 RUTHIN				
Client: ALDI STORES LTD				
Status: PLANNING				
Scale: 1:100		Drawing Size: A1		
Date: Feb 19	Drawn By: IMM	Checked: MS		
Drawing Title: PROPOSED EMPLOYMENT UNIT 1 ELEVATIONS				
Job/Dwg No: 13850 - 111	Rev: D			
<input type="checkbox"/> 2 St. Johns North, Wakefield, WF1 3QA <input type="checkbox"/> Carvers Warehouse, 77 Dale Street, Manchester, M1 2HG <input type="checkbox"/> The Old Rectory, 79 High Street, Newport Pagnell, MK16 8AB <input type="checkbox"/> 101 London Road, Reading, RG1 5BT <input type="checkbox"/> 10 Gess Court, St Christophers Place, London, W1U 1JJ <input type="checkbox"/> 1, 0207 4091215				



This drawing is copyright and may not be reproduced in whole or part without written authority. Do not scale off this drawing.